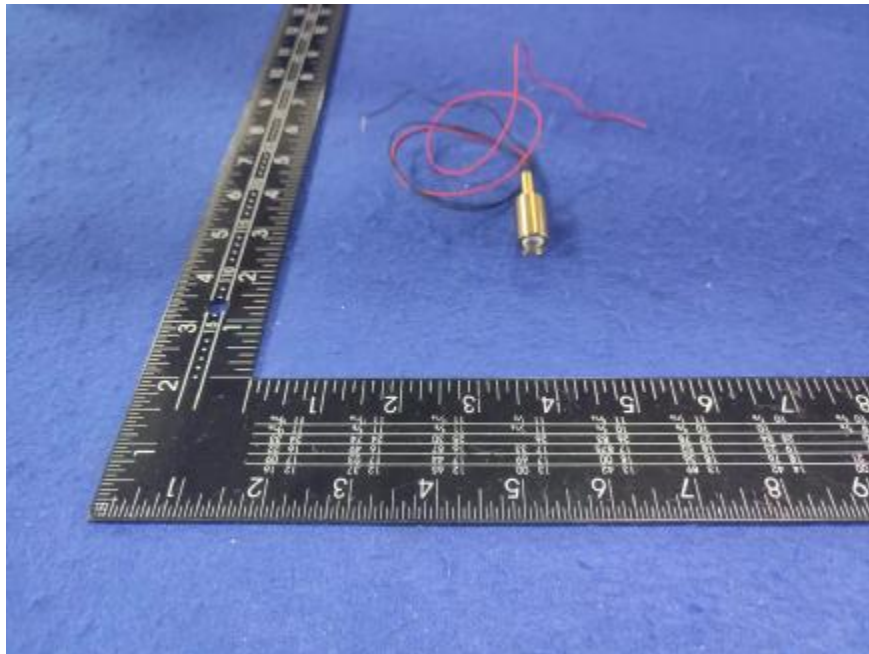


### Luminaire Photograph



Light Output Ratio:	77.8%	
Luminaire Power:	0.8778 W	
SHR Nominal:	0.50	Calculated using the TM5
SHR Maximum:	0.65	fine grid method.

C Range: 0 - 360DEG  
C Interval: 30.0DEG  
Test Speed: HIGH  
Temperature: 25.3 °C  
Operators: zoe  
Test Date: 2024-10-16

Range: 0 - 180DEG  
Interval: 1.0DEG  
Test System: EVERFINE GO-SPEX500\_V1 SYSTEM V2.00.461  
Humidity: 65.0%  
Test Distance: 3.160m [K=1.0000]  
Remarks: LAMP: BXEX-30G-11H-3A-00-0-0 Ra: 90  
LENS: 25R  
NOT DRIVER: 300mA  
30minutes warm-up

## LUMINOUS INTENSITY DISTRIBUTION DIAGRAM

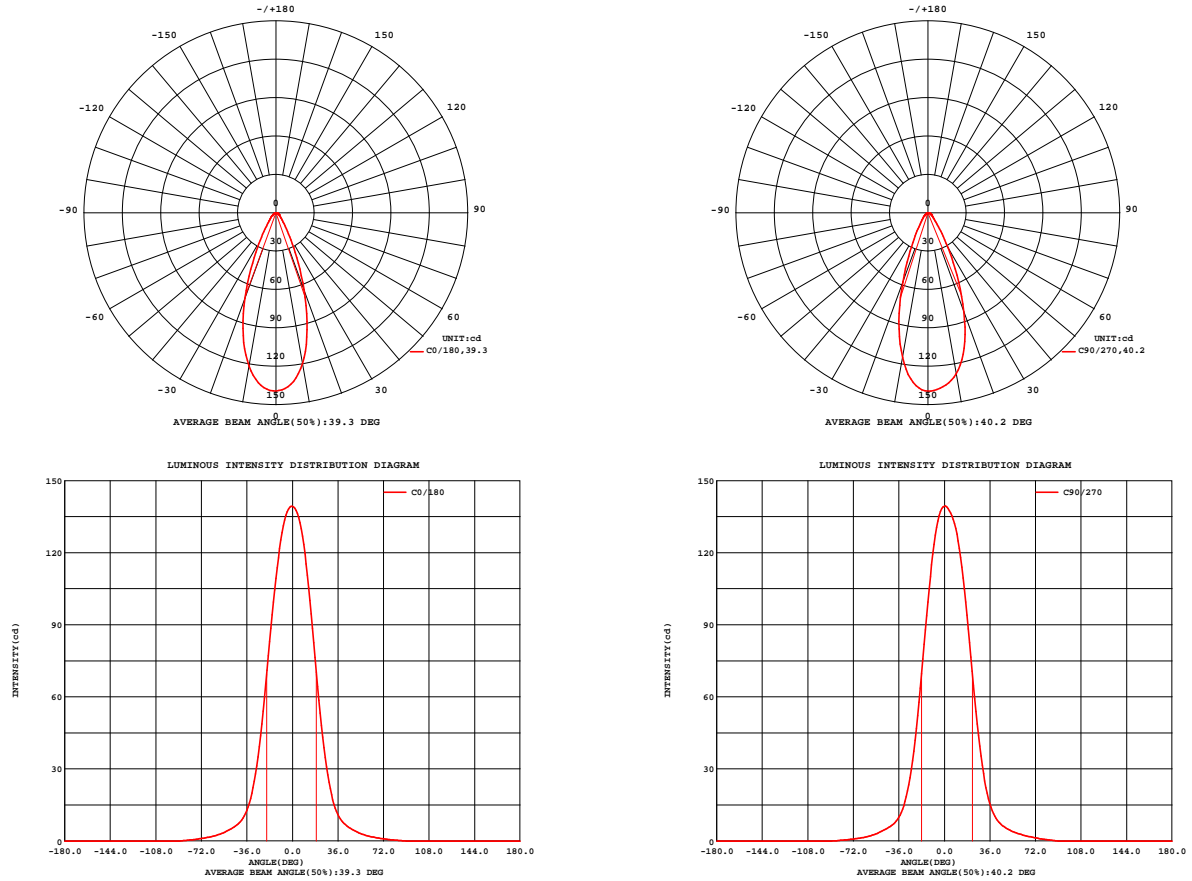


Fig. C0/C180

Fig. C90/C270

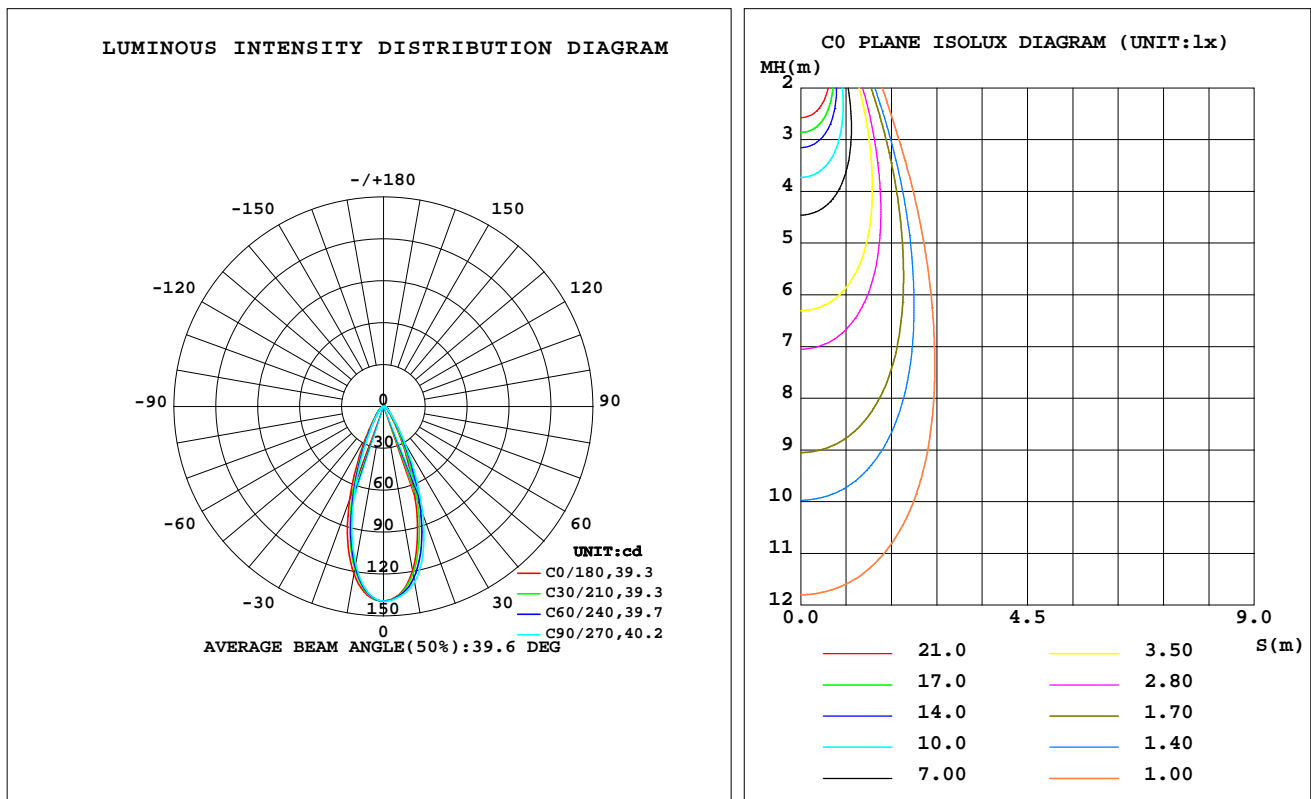
C Range: 0 - 360DEG  
 C Interval: 30.0DEG  
 Test Speed: HIGH  
 Temperature: 25.3 °C  
 Operators: zoe  
 Test Date: 2024-10-16

Range: 0 - 180DEG  
 Interval: 1.0DEG  
 Test System: EVERFINE GO-SPEX500\_V1 SYSTEM V2.00.461  
 Humidity: 65.0%  
 Test Distance: 3.160m [K=1.0000]  
 Remarks: LAMP: BXEX-30G-11H-3A-00-0-0 Ra: 90  
 LENS: 25R  
 NOT DRIVER: 300mA  
 30minutes warm-up

## LUMINAIRE PHOTOMETRIC TEST REPORT

Test:U:2.9259V I:0.3000A P:0.8778W PF:1.0000 Freq:49.99Hz Lamp Flux:99.5902x1 lm		
NAME: 2468.105	TYPE:	WEIGHT:
SPEC.: 3000K	DIM.:	SERIAL No.: 2410161252
MFR.: RISE	SUR.: 0.00005024m2	Shielding Angle:

DATA OF LAMP		PHOTOMETRIC DATA Eff: 88.24 lm/W			
MODEL	Brideglux	I <sub>max</sub> (cd)	139.4	S/MH(C0/180)	0.64
NOMINAL POWER(W)	1	LOR(%)	77.8	S/MH(C90/270)	0.59
RATED VOLTAGE(V)	3	TOTAL FLUX(lm)	77.451	UP,DN(C0-180)	0.0,42.1
NOMINAL FLUX(lm)	99.5902	CIE CLASS	DIRECT	UP,DN(C180-360)	0.0,35.7
LAMPS INSIDE	1	up(%)	0.0	CIBSE SHR NOM	0.50
TEST VOLTAGE(V)	3	down(%)	77.8	CIBSE SHR MAX	0.65



C Range: 0 - 360DEG  
C Interval: 30.0DEG  
Test Speed: HIGH  
Temperature:25.3℃  
Operators:zoe  
Test Date:2024-10-16

Range: 0 - 180DEG  
Interval: 1.0DEG  
Test System:EVERFINE GO-SPEX500\_V1 SYSTEM V2.00.461  
Humidity:65.0%  
Test Distance:3.160m [K=1.0000]  
Remarks: LAMP:BXEX-30G-11H-3A-00-0-0 Ra:90  
LENS:25R  
NOT DRIVER:300mA  
30minutes warm-up

## ZONAL FLUX DIAGRAM

### ZONAL FLUX DIAGRAM:

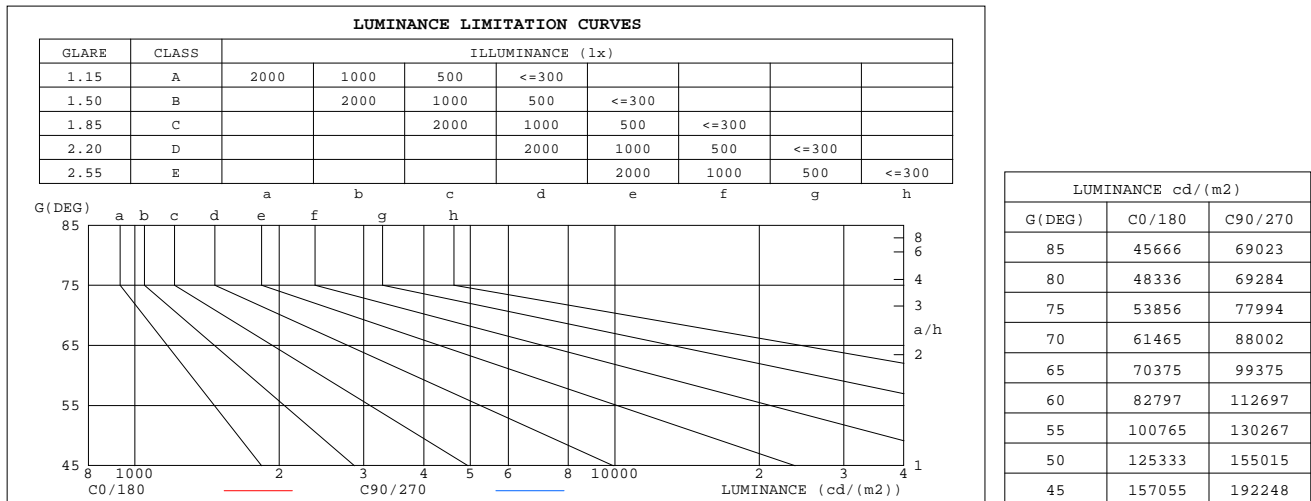
	C0	C45	C90	C135	C180	C225	C270	C315		zone	total	%lum,lamp
10	119.6	123.2	127.7	126.5	121.7	117.6	114.9	116.0	0- 10	12.43	12.43	16.1,12.5
20	64.34	73.93	82.47	80.71	71.11	62.35	57.69	58.19	10- 20	26.61	39.04	50.4,39.2
30	21.72	26.23	31.52	30.04	24.89	20.78	18.51	18.25	20- 30	19.57	58.61	75.7,58.9
40	7.854	9.079	10.27	9.774	8.702	8.235	7.177	6.910	30- 40	8.925	67.53	87.2,67.8
50	4.048	4.384	5.007	4.411	4.572	4.566	3.885	3.593	40- 50	4.661	72.20	93.2,72.5
60	2.080	2.195	2.831	2.138	2.397	2.251	1.949	1.718	50- 60	2.771	74.97	96.8,75.3
70	1.056	1.106	1.512	1.020	1.190	1.037	0.9371	0.8068	60- 70	1.526	76.49	98.8,76.8
80	0.4217	0.4647	0.6045	0.4196	0.4592	0.3980	0.3567	0.3286	70- 80	0.7503	77.24	99.7,77.6
90	0	0	0	0	0	0	0	0	80- 90	0.2091	77.45	100,77.8
100	0	0	0	0	0	0	0	0	90-100	0	77.45	100,77.8
110	0	0	0	0	0	0	0	0	100-110	0	77.45	100,77.8
120	0	0	0	0	0	0	0	0	110-120	0	77.45	100,77.8
130	0	0	0	0	0	0	0	0	120-130	0	77.45	100,77.8
140	0	0	0	0	0	0	0	0	130-140	0	77.45	100,77.8
150	0	0	0	0	0	0	0	0	140-150	0	77.45	100,77.8
160	0	0	0	0	0	0	0	0	150-160	0	77.45	100,77.8
170	0	0	0	0	0	0	0	0	160-170	0	77.45	100,77.8
180	0	0	0	0	0	0	0	0	170-180	0	77.45	100,77.8
DEG	LUMINOUS INTENSITY:cd									UNIT:lm		

C Range: 0 - 360DEG  
C Interval: 30.0DEG  
Test Speed: HIGH  
Temperature:25.3℃  
Operators:zoe  
Test Date:2024-10-16

Range: 0 - 180DEG  
Interval: 1.0DEG  
Test System:EVERFINE GO-SPEX500\_V1 SYSTEM V2.00.461  
Humidity:65.0%  
Test Distance:3.160m [K=1.0000]  
Remarks: LAMP:BXEX-30G-11H-3A-00-0-0 Ra:90  
LENS:25R  
NOT DRIVER:300mA  
30minutes warm-up

### LUMINANCE LIMITATION CURVES

Test:U:2.9259V I:0.3000A P:0.8778W PF:1.0000 Freq:49.99Hz Lamp Flux:99.5902x1 lm		
NAME: 2468.105	TYPE:	WEIGHT:
SPEC.: 3000K	DIM.:	SERIAL No.: 2410161252
MFR.: RISE	SUR.: 0.00005024m2	Shielding Angle:



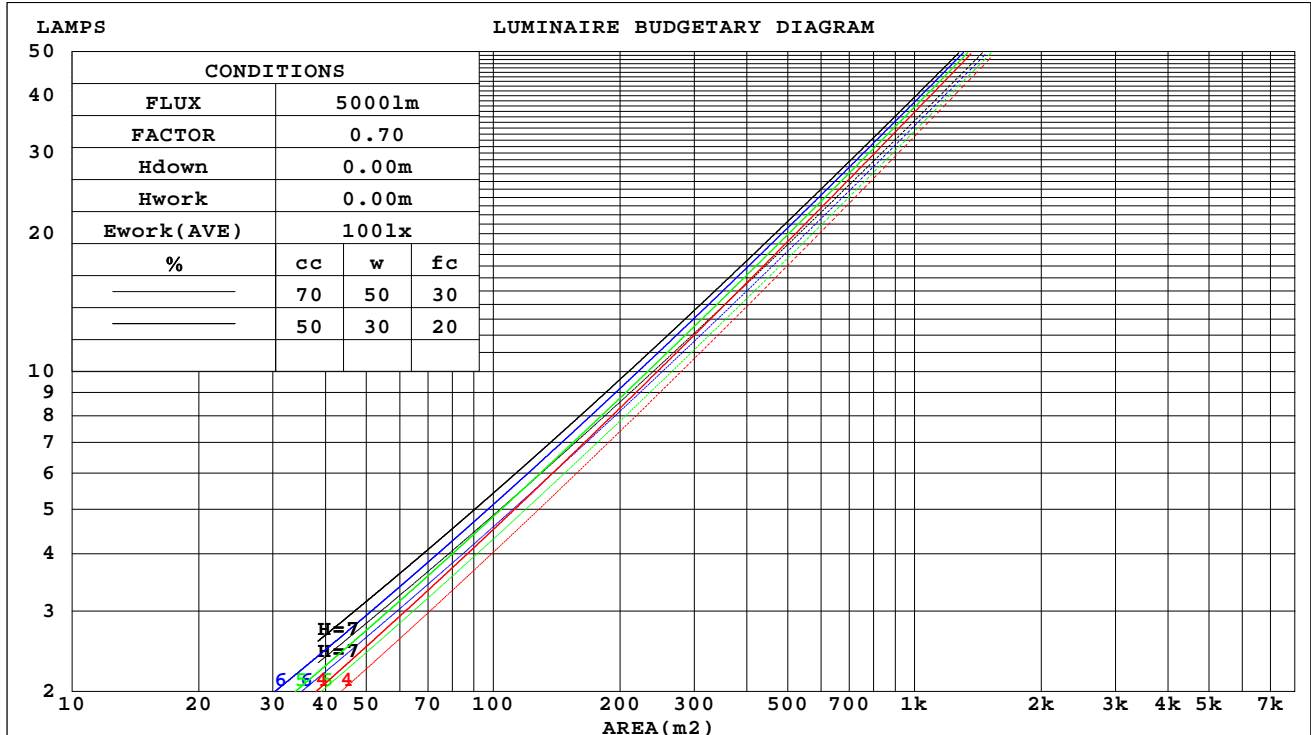
C Range: 0 - 360DEG  
C Interval: 30.0DEG  
Test Speed: HIGH  
Temperature:25.3℃  
Operators:zoe  
Test Date:2024-10-16

Range: 0 - 180DEG  
Interval: 1.0DEG  
Test System:EVERFINE GO-SPEX500\_V1 SYSTEM V2.00.461  
Humidity:65.0%  
Test Distance:3.160m [K=1.0000]  
Remarks: LAMP:BXEX-30G-11H-3A-00-0-0 Ra:90  
LENS:25R  
NOT DRIVER:300mA  
30minutes warm-up

## CU AND LUMINAIRE BUDGETARY ESTIMATE DIAGRAM

Test:U:2.9259V I:0.3000A P:0.8778W PF:1.0000 Freq:49.99Hz Lamp Flux:99.5902x1 lm		
NAME: 2468.105	TYPE:	WEIGHT:
SPEC.: 3000K	DIM.:	SERIAL No.: 2410161252
MFR.: RISE	SUR.: 0.00005024m2	Shielding Angle:

cc	80%			70%			50%			30%			10%			0
w	50%	30%	10%	50%	30%	10%	50%	30%	10%	50%	30%	10%	50%	30%	10%	0
fc	20%			20%			20%			20%			20%			0
RCR	RCR:Room Cavity Ratio															



C Range: 0 - 360DEG  
C Interval: 30.0DEG  
Test Speed: HIGH  
Temperature:25.3℃  
Operators:zoe  
Test Date:2024-10-16

Range: 0 - 180DEG  
Interval: 1.0DEG  
Test System:EVERFINE GO-SPEX500\_V1 SYSTEM V2.00.461  
Humidity:65.0%  
Test Distance:3.160m [K=1.0000]  
Remarks: LAMP:BXEX-30G-11H-3A-00-0-0 Ra:90  
LENS:25R  
NOT DRIVER:300mA  
30minutes warm-up

### WEC AND CCEC

Test:U:2.9259V I:0.3000A P:0.8778W PF:1.0000 Freq:49.99Hz Lamp Flux:99.5902x1 lm		
NAME: 2468.105	TYPE:	WEIGHT:
SPEC.: 3000K	DIM.:	SERIAL No.: 2410161252
MFR.: RISE	SUR.: 0.00005024m2	Shielding Angle:

cc	80%			70%			50%			30%			10%			0	
w	50%	30%	10%	50%	30%	10%	50%	30%	10%	50%	30%	10%	50%	30%	10%	0	
fc	20%			20%			20%			20%			20%			0	
RCR	RCR:Room Cavity Ratio						Wall Exitance Coefficients(WEC)										
0.0																	
1.0	.142	.081	.026	.136	.078	.025	.127	.073	.023	.118	.068	.022	.109	.063	.020		
2.0	.134	.074	.023	.130	.071	.022	.121	.068	.021	.114	.064	.020	.107	.060	.019		
3.0	.126	.067	.020	.123	.066	.020	.116	.063	.019	.109	.060	.018	.103	.057	.018		
4.0	.119	.062	.018	.116	.061	.018	.110	.058	.017	.104	.056	.017	.099	.054	.016		
5.0	.112	.057	.017	.110	.056	.016	.104	.054	.016	.100	.053	.016	.095	.051	.015		
6.0	.107	.053	.015	.104	.053	.015	.099	.051	.015	.095	.049	.015	.091	.048	.014		
7.0	.101	.050	.014	.099	.049	.014	.095	.048	.014	.091	.047	.014	.087	.045	.013		
8.0	.096	.047	.013	.094	.046	.013	.091	.045	.013	.087	.044	.013	.084	.043	.013		
9.0	.092	.044	.012	.090	.044	.012	.087	.043	.012	.084	.042	.012	.081	.041	.012		
10.0	.088	.042	.012	.086	.042	.012	.083	.041	.011	.080	.040	.011	.078	.039	.011		

cc	80%			70%			50%			30%			10%			0
w	50%	30%	10%	50%	30%	10%	50%	30%	10%	50%	30%	10%	50%	30%	10%	0
fc	20%			20%			20%			20%			20%			0
RCR	RCR:Room Cavity Ratio			Ceiling Cavity Exitance Coefficients(CCEC)												
0.0	.148	.148	.148	.127	.127	.127	.086	.086	.086	.050	.050	.050	.016	.016	.016	
1.0	.133	.122	.112	.114	.105	.097	.078	.072	.067	.045	.042	.039	.014	.013	.013	
2.0	.122	.103	.087	.104	.089	.076	.071	.061	.053	.041	.036	.031	.013	.012	.010	
3.0	.112	.088	.070	.096	.076	.060	.066	.053	.042	.038	.031	.025	.012	.010	.008	
4.0	.104	.077	.056	.089	.066	.049	.061	.046	.035	.035	.027	.020	.011	.009	.007	
5.0	.097	.068	.047	.083	.059	.041	.057	.041	.029	.033	.024	.017	.011	.008	.006	
6.0	.090	.060	.039	.078	.052	.034	.054	.037	.024	.031	.022	.014	.010	.007	.005	
7.0	.085	.055	.033	.073	.047	.029	.051	.033	.020	.029	.020	.012	.009	.006	.004	
8.0	.080	.050	.028	.069	.043	.025	.048	.030	.018	.028	.018	.010	.009	.006	.003	
9.0	.076	.045	.025	.066	.039	.022	.046	.028	.015	.027	.016	.009	.009	.005	.003	
10.0	.072	.042	.022	.062	.036	.019	.043	.026	.013	.025	.015	.008	.008	.005	.003	

C Range: 0 - 360DEG  
C Interval: 30.0DEG  
Test Speed: HIGH  
Temperature:25.3℃  
Operators:zoe  
Test Date:2024-10-16

Range: 0 - 180DEG  
Interval: 1.0DEG  
Test System:EVERFINE GO-SPEX500\_V1 SYSTEM V2.00.461  
Humidity:65.0%  
Test Distance:3.160m [K=1.0000]  
Remarks: LAMP:BXEX-30G-11H-3A-00-0-0 Ra:90  
LENS:25R  
NOT DRIVER:300mA  
30minutes warm-up

## UGR(Unified Glare Rating) Table

Test:U:2.9259V I:0.3000A P:0.8778W PF:1.0000 Freq:49.99Hz Lamp Flux:99.5902x1 lm										
NAME: 2468.105					TYPE:			WEIGHT:		
SPEC.: 3000K					DIM.:			SERIAL No.: 2410161252		
MFR.: RISE					SUR.: 0.00005024m2			Shielding Angle:		
ceiling/cavity	0.7	0.7	0.5	0.5	0.3	0.7	0.7	0.5	0.5	0.3
walls	0.5	0.3	0.5	0.3	0.3	0.5	0.3	0.5	0.3	0.3
working plane	0.2	0.2	0.2	0.2	0.2	0.2	0.2	0.2	0.2	0.2
Room dimensions	Viewed crosswise					Viewed endwise				
x = 2H y = 2H	32.8	33.8	33.1	33.9	34.1	34.5	35.4	34.7	35.5	35.7
3H	33.3	34.1	33.5	34.3	34.5	35.1	36.0	35.4	36.2	36.4
4H	33.5	34.3	33.7	34.5	34.7	35.4	36.2	35.7	36.4	36.6
6H	33.6	34.4	33.9	34.6	34.9	35.6	36.4	35.9	36.6	36.8
8H	33.7	34.4	34.0	34.7	34.9	35.7	36.4	36.0	36.7	36.9
12H	33.7	34.4	34.0	34.7	35.0	35.7	36.4	36.0	36.7	37.0
4H 2H	33.1	33.9	33.3	34.1	34.3	34.5	35.3	34.8	35.6	35.8
3H	33.6	34.3	33.9	34.6	34.9	35.4	36.1	35.7	36.3	36.6
4H	33.9	34.5	34.2	34.8	35.1	35.8	36.4	36.1	36.7	37.0
6H	34.1	34.7	34.5	35.0	35.3	36.1	36.6	36.4	37.0	37.3
8H	34.2	34.7	34.6	35.1	35.4	36.2	36.7	36.6	37.1	37.4
12H	34.3	34.7	34.7	35.1	35.5	36.3	36.8	36.7	37.1	37.5
8H 4H	34.0	34.5	34.4	34.9	35.2	35.8	36.3	36.1	36.6	37.0
6H	34.3	34.7	34.7	35.1	35.5	36.2	36.6	36.6	37.0	37.4
8H	34.4	34.8	34.9	35.2	35.7	36.4	36.7	36.8	37.2	37.6
12H	34.6	34.9	35.0	35.3	35.8	36.5	36.8	37.0	37.3	37.8
12H 4H	34.0	34.5	34.4	34.8	35.2	35.7	36.2	36.1	36.6	37.0
6H	34.3	34.7	34.8	35.1	35.6	36.2	36.5	36.6	37.0	37.4
8H	34.5	34.8	35.0	35.3	35.7	36.4	36.7	36.8	37.1	37.6
Variations with the observer position at spacings(CIE Pub.117):										
S = 1.0H	+ 0.8 / - 1.0					+ 0.8 / - 0.8				
1.5H	+ 1.0 / - 0.9					+ 1.4 / - 0.5				
2.0H	+ 1.5 / - 1.5					+ 1.1 / - 0.7				

CIE Pub.117, 99.59 lm Total Lamp Luminous Flux Correct (8log(F/F0) = -8.0)  
Area: 5.024e-005 m2

C Range: 0 - 360DEG  
C Interval: 30.0DEG  
Test Speed: HIGH  
Temperature:25.3℃  
Operators:zoe  
Test Date:2024-10-16

Range: 0 - 180DEG  
Interval: 1.0DEG  
Test System:EVERFINE GO-SPEX500\_V1 SYSTEM V2.00.461  
Humidity:65.0%  
Test Distance:3.160m [K=1.0000]  
Remarks: LAMP:BXEX-30G-11H-3A-00-0-0 Ra:90  
LENS:25R  
NOT DRIVER:300mA  
30minutes warm-up



### UTILIZATION FACTORS TABLE

Test:U:2.9259V I:0.3000A P:0.8778W PF:1.0000 Freq:49.99Hz Lamp Flux:99.5902x1 lm		
NAME: 2468.105	TYPE:	WEIGHT:
SPEC.: 3000K	DIM.:	SERIAL No.: 2410161252
MFR.: RISE	SUR.: 0.00005024m2	Shielding Angle:

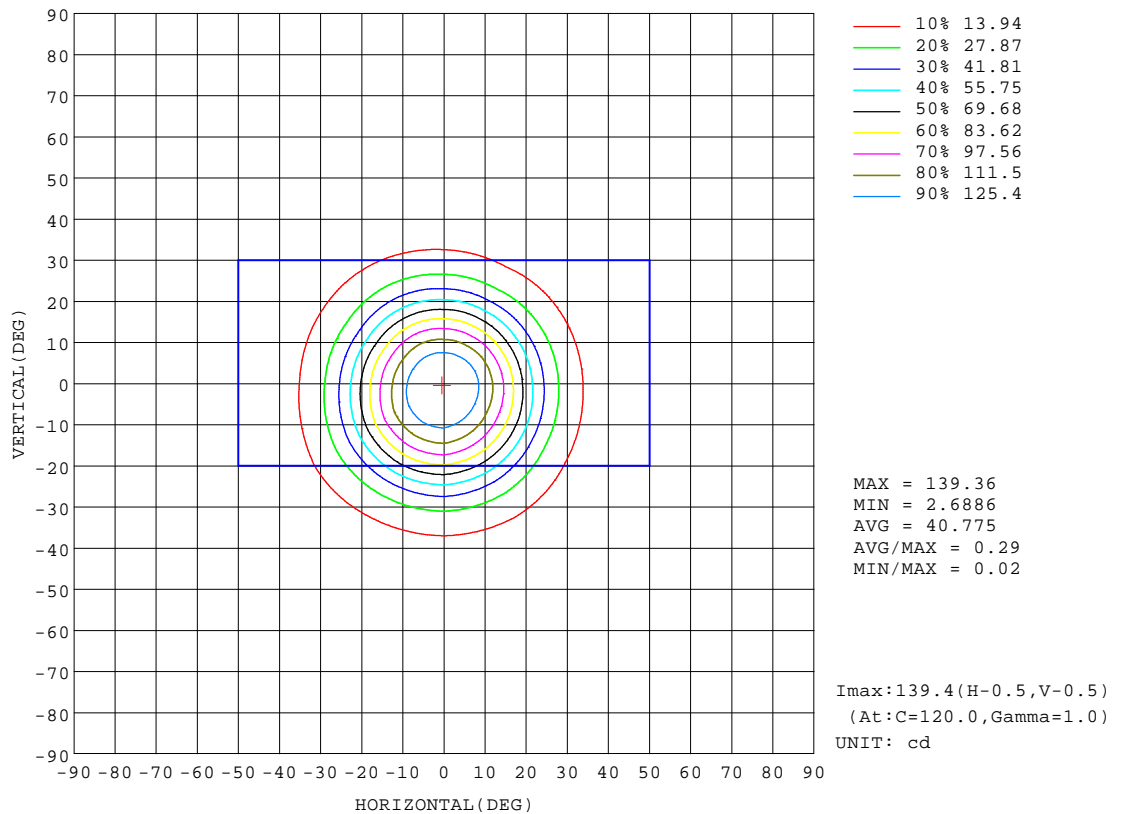
REFLECTANCE										
Ceiling	0.8	0.8	0.8	0.7	0.7	0.7	0.5	0.5	0.5	0
Walls	0.7	0.5	0.3	0.7	0.5	0.3	0.7	0.5	0.3	0
Working plane	0.2	0.2	0.2	0.2	0.2	0.2	0.2	0.2	0.2	0
ROOM INDEX	UTILIZATION FACTORS(PERCENT) $k(RI) \times RCR = 5$									
k = 0.60	65	60	56	65	59	56	64	59	56	53
0.80	71	66	63	70	66	63	70	65	62	59
1.00	75	70	67	74	70	67	73	70	66	63
1.25	78	74	71	78	73	70	76	72	70	66
1.50	81	77	74	80	76	73	78	75	72	69
2.00	83	80	77	82	79	76	80	77	75	71
2.50	85	81	79	83	80	78	81	79	77	72
3.00	86	83	81	85	82	80	82	80	78	73
4.00	88	85	83	86	84	82	83	82	80	75
5.00	89	87	85	87	85	84	84	83	82	76
ROOM INDEX	UF(total)									Direct
According to DIN EN 13032-2 2004			Suspended					SHRNOM = 1.25		

C Range: 0 - 360DEG  
C Interval: 30.0DEG  
Test Speed: HIGH  
Temperature:25.3℃  
Operators:zoe  
Test Date:2024-10-16

Range: 0 - 180DEG  
Interval: 1.0DEG  
Test System:EVERFINE GO-SPEX500\_V1 SYSTEM V2.00.461  
Humidity:65.0%  
Test Distance:3.160m [K=1.0000]  
Remarks: LAMP:BXEX-30G-11H-3A-00-0-0 Ra:90  
LENS:25R  
NOT DRIVER:300mA  
30minutes warm-up

## ISOCANDELA DIAGRAM

Test:U:2.9259V I:0.3000A P:0.8778W PF:1.0000 Freq:49.99Hz Lamp Flux:99.5902x1 lm		
NAME: 2468.105	TYPE:	WEIGHT:
SPEC.: 3000K	DIM.:	SERIAL No.: 2410161252
MFR.: RISE	SUR.: 0.00005024m2	Shielding Angle:

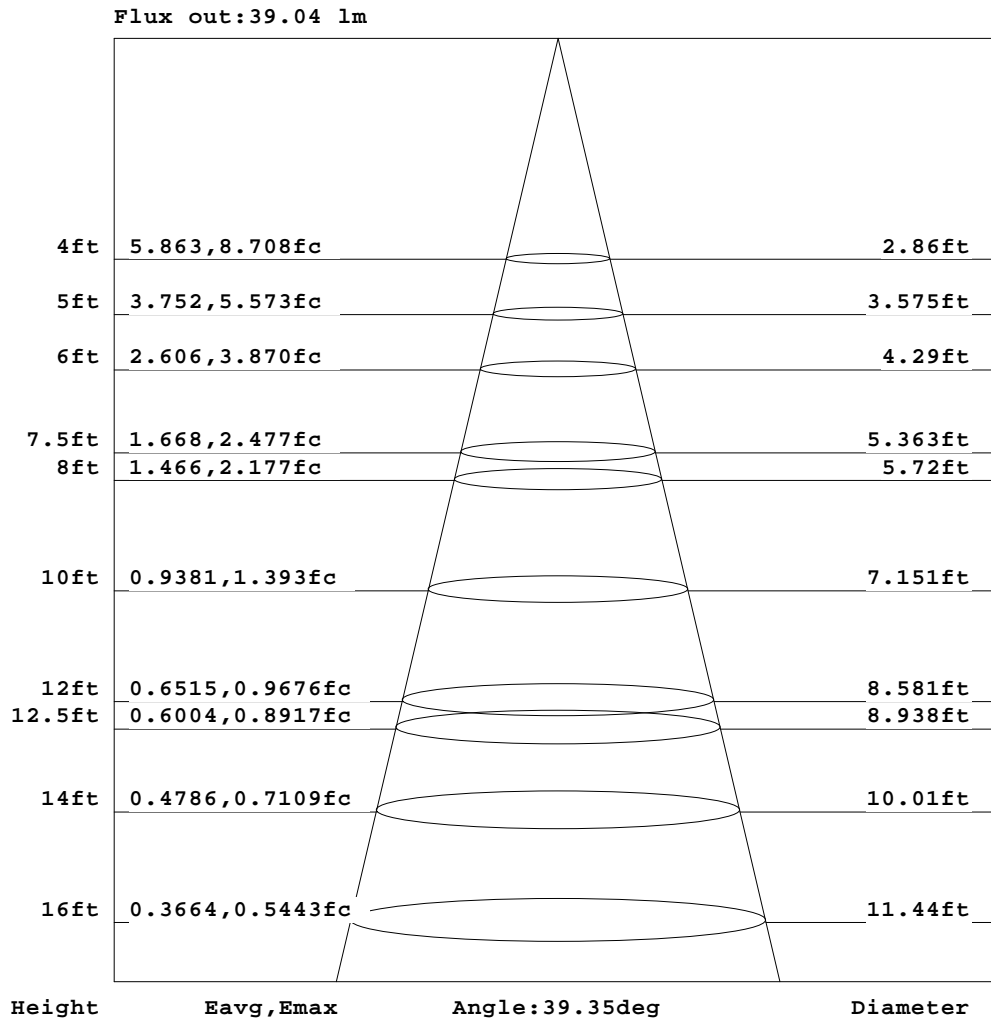


C Range: 0 - 360DEG  
C Interval: 30.0DEG  
Test Speed: HIGH  
Temperature:25.3℃  
Operators:zoe  
Test Date:2024-10-16

Range: 0 - 180DEG  
Interval: 1.0DEG  
Test System:EVERFINE GO-SPEX500\_V1 SYSTEM V2.00.461  
Humidity:65.0%  
Test Distance:3.160m [K=1.0000]  
Remarks: LAMP:BXEX-30G-11H-3A-00-0-0 Ra:90  
LENS:25R  
NOT DRIVER:300mA  
30minutes warm-up

## AAI Figure

Test:U:2.9259V I:0.3000A P:0.8778W PF:1.0000 Freq:49.99Hz Lamp Flux:99.5902x1 lm		
NAME: 2468.105	TYPE:	WEIGHT:
SPEC.: 3000K	DIM.:	SERIAL No.: 2410161252
MFR.: RISE	SUR.: 0.00005024m2	Shielding Angle:



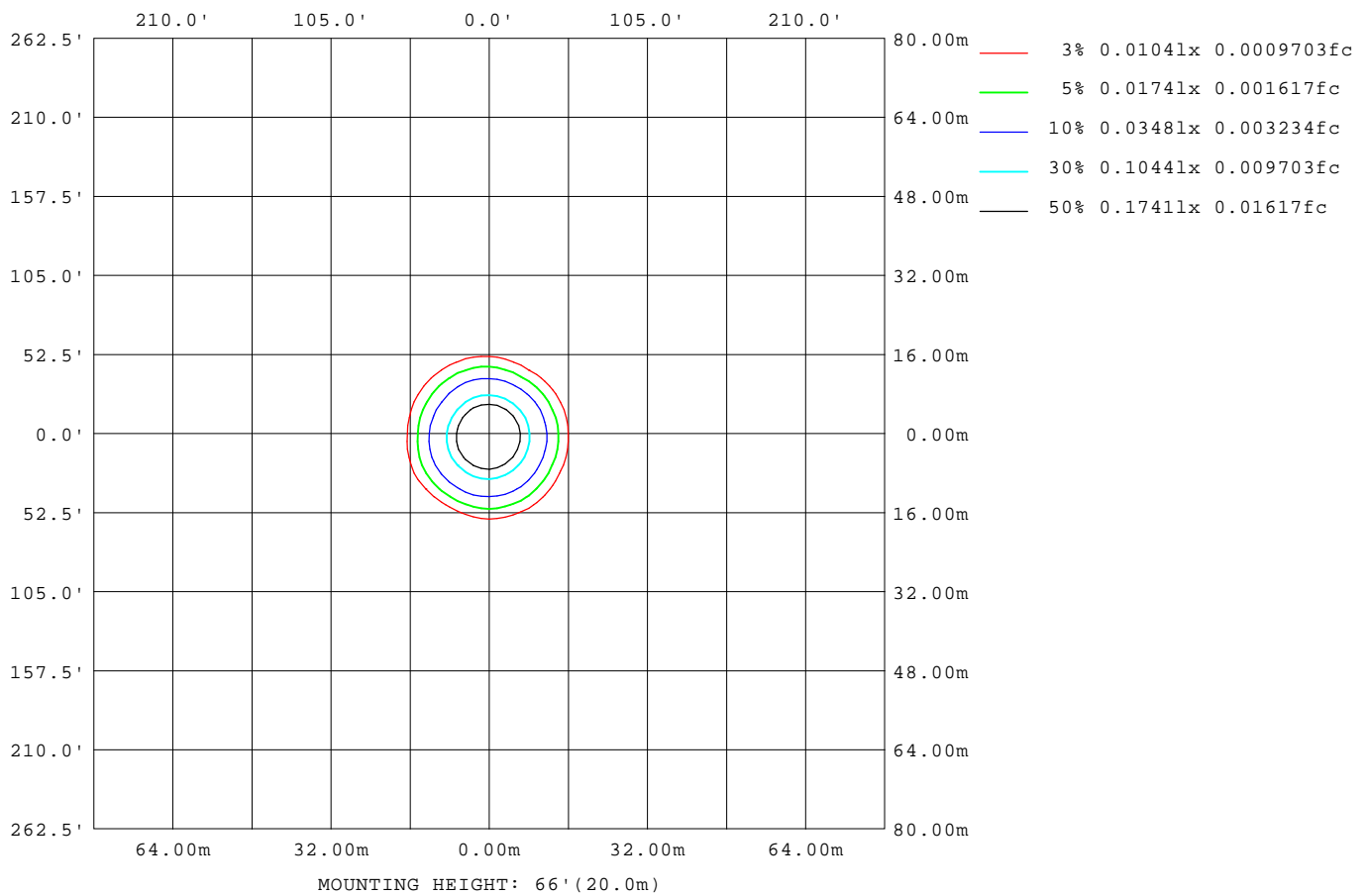
Note:The Curves indicate the illuminated area and the average illumination when the luminaire is at different distance.

C Range: 0 - 360DEG  
C Interval: 30.0DEG  
Test Speed: HIGH  
Temperature:25.3℃  
Operators:zoe  
Test Date:2024-10-16

Range: 0 - 180DEG  
Interval: 1.0DEG  
Test System:EVERFINE GO-SPEX500\_V1 SYSTEM V2.00.461  
Humidity:65.0%  
Test Distance:3.160m [K=1.0000]  
Remarks: LAMP:BXEX-30G-11H-3A-00-0-0 Ra:90  
LENS:25R  
NOT DRIVER:300mA  
30minutes warm-up

## ISOLUX DIAGRAM

Test:U:2.9259V I:0.3000A P:0.8778W PF:1.0000 Freq:49.99Hz Lamp Flux:99.5902x1 lm		
NAME: 2468.105	TYPE:	WEIGHT:
SPEC.: 3000K	DIM.:	SERIAL No.: 2410161252
MFR.: RISE	SUR.: 0.00005024m2	Shielding Angle:



C Range: 0 - 360DEG  
C Interval: 30.0DEG  
Test Speed: HIGH  
Temperature:25.3℃  
Operators:zoe  
Test Date:2024-10-16

Range: 0 - 180DEG  
Interval: 1.0DEG  
Test System:EVERFINE GO-SPEX500\_V1 SYSTEM V2.00.461  
Humidity:65.0%  
Test Distance:3.160m [K=1.0000]  
Remarks: LAMP:BXEX-30G-11H-3A-00-0-0 Ra:90  
LENS:25R  
NOT DRIVER:300mA  
30minutes warm-up

## LED Avg.L Report

Test:U:2.9259V I:0.3000A P:0.8778W PF:1.0000 Freq:49.99Hz Lamp Flux:99.5902x1 lm		
NAME: 2468.105	TYPE:	WEIGHT:
SPEC.: 3000K	DIM.:	SERIAL No.: 2410161252
MFR.: RISE	SUR.: 0.00005024m2	Shielding Angle:

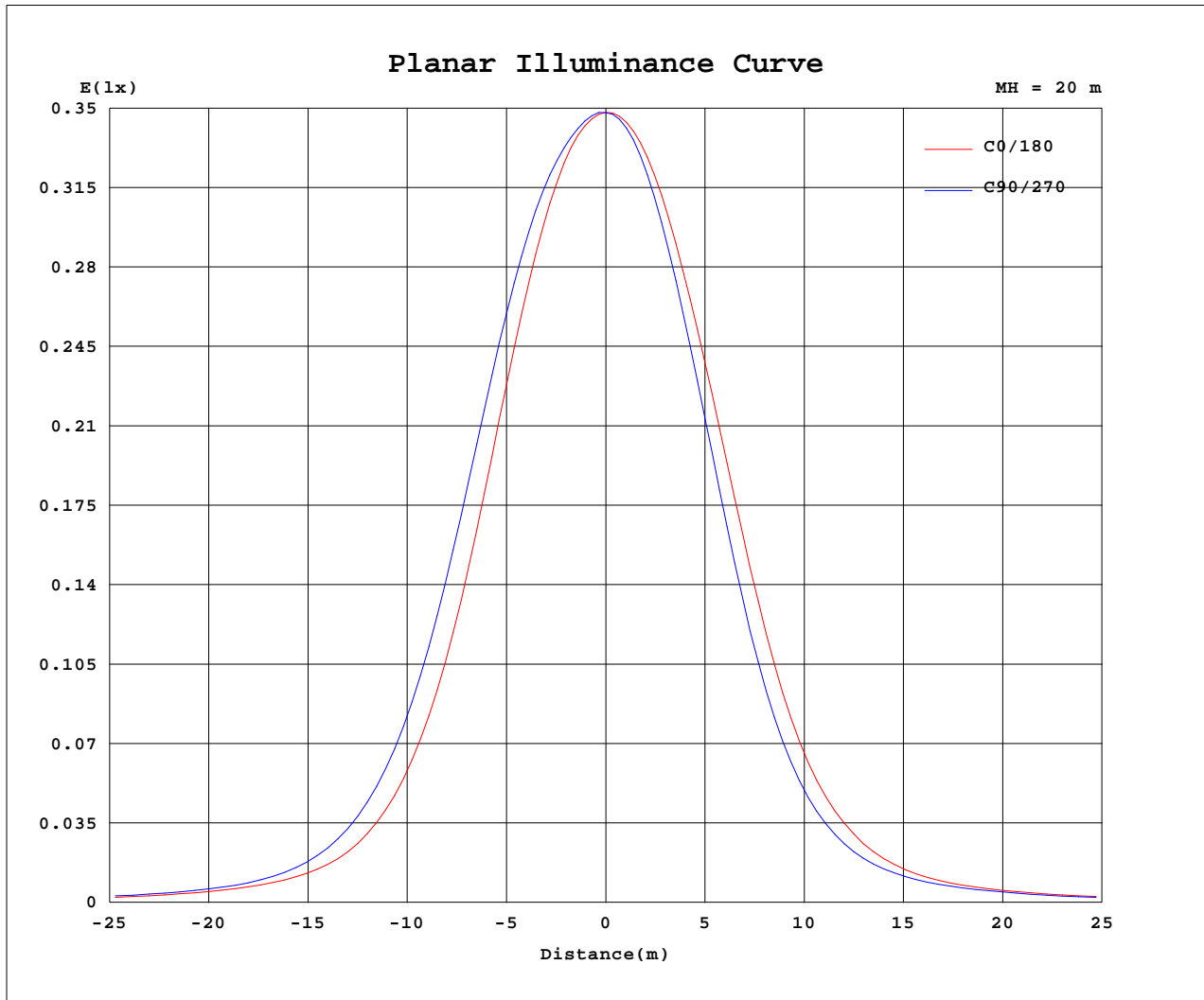
AvgL	cd/m2
L_0~180(65)av	75371
L_0~180(75)av	57163
L_0~180(85)av	47017
L_90~270(65)av	81694
L_90~270(75)av	62419
L_90~270(85)av	46213
L_45(65)av	66346
L_45(75)av	49725
L_45(85)av	43040

Standard: GB/T 29293-2012

C Range: 0 - 360DEG  
C Interval: 30.0DEG  
Test Speed: HIGH  
Temperature:25.3℃  
Operators:zoe  
Test Date:2024-10-16

Range: 0 - 180DEG  
Interval: 1.0DEG  
Test System:EVERFINE GO-SPEX500\_V1 SYSTEM V2.00.461  
Humidity:65.0%  
Test Distance:3.160m [K=1.0000]  
Remarks: LAMP:BXEX-30G-11H-3A-00-0-0 Ra:90  
LENS:25R  
NOT DRIVER:300mA  
30minutes warm-up

## Planar Illuminance Curve



C Range: 0 - 360DEG  
 C Interval: 30.0DEG  
 Test Speed: HIGH  
 Temperature: 25.3 °C  
 Operators: zoe  
 Test Date: 2024-10-16

Range: 0 - 180DEG  
 Interval: 1.0DEG  
 Test System: EVERFINE GO-SPEX500\_V1 SYSTEM V2.00.461  
 Humidity: 65.0%  
 Test Distance: 3.160m [K=1.0000]  
 Remarks: LAMP: BXEX-30G-11H-3A-00-0-0 Ra: 90  
 LENS: 25R  
 NOT DRIVER: 300mA  
 30minutes warm-up



## LUMINOUS DISTRIBUTION INTENSITY DATA

Test:U:2.9259V I:0.3000A P:0.8778W PF:1.0000 Freq:49.99Hz Lamp Flux:99.5902x1 lm		
NAME: 2468.105	TYPE:	WEIGHT:
SPEC.: 3000K	DIM.:	SERIAL No.: 2410161252
MFR.: RISE	SUR.: 0.00005024m2	Shielding Angle:

Table--1

UNIT: cd

C(DEG) (DEG)	0	30	60	90	120	150	180	210	240	270	300	330						
0	139	139	139	139	139	139	139	139	139	139	139	139						
5	135	135	136	136	136	136	135	134	134	133	133	134						
10	120	122	125	128	127	126	122	118	117	115	115	117						
15	94.6	99.0	105	109	109	106	99.4	93.7	90.9	87.9	87.6	90.1						
20	64.3	70.8	77.0	82.5	82.4	79.0	71.1	64.0	60.7	57.7	56.9	59.5						
25	38.8	42.9	49.3	53.8	53.2	50.5	43.7	37.8	36.1	33.3	32.1	35.1						
30	21.7	23.9	28.6	31.5	30.5	29.6	24.9	21.4	20.2	18.5	17.3	19.2						
35	12.3	13.5	16.1	17.5	17.0	16.8	14.2	12.8	11.8	10.8	9.87	11.0						
40	7.85	8.35	9.81	10.3	9.45	10.1	8.70	8.59	7.88	7.18	6.49	7.33						
45	5.58	5.78	6.59	6.83	5.75	6.83	6.15	6.50	5.78	5.30	4.64	5.38						
50	4.05	4.00	4.77	5.01	3.87	4.95	4.57	4.85	4.28	3.88	3.20	3.98						
55	2.90	2.68	3.52	3.75	2.59	3.56	3.33	3.41	3.11	2.78	2.10	2.90						
60	2.08	1.77	2.62	2.83	1.73	2.55	2.40	2.29	2.22	1.95	1.34	2.09						
65	1.49	1.19	1.93	2.11	1.16	1.80	1.71	1.51	1.55	1.36	0.86	1.49						
70	1.06	0.83	1.38	1.51	0.80	1.24	1.19	1.01	1.07	0.94	0.58	1.03						
75	0.70	0.57	0.93	1.01	0.55	0.82	0.79	0.65	0.69	0.61	0.41	0.67						
80	0.42	0.37	0.56	0.60	0.36	0.48	0.46	0.39	0.40	0.36	0.27	0.39						
85	0.20	0.21	0.28	0.30	0.21	0.24	0.21	0.18	0.14	0.10	0.12	0.16						
90	0.00	0.00	0.00	0.00	0.00	0.00	0.00	0.00	0.00	0.00	0.00	0.00						
95	0.00	0.00	0.00	0.00	0.00	0.00	0.00	0.00	0.00	0.00	0.00	0.00						
100	0.00	0.00	0.00	0.00	0.00	0.00	0.00	0.00	0.00	0.00	0.00	0.00						
105	0.00	0.00	0.00	0.00	0.00	0.00	0.00	0.00	0.00	0.00	0.00	0.00						
110	0.00	0.00	0.00	0.00	0.00	0.00	0.00	0.00	0.00	0.00	0.00	0.00						
115	0.00	0.00	0.00	0.00	0.00	0.00	0.00	0.00	0.00	0.00	0.00	0.00						
120	0.00	0.00	0.00	0.00	0.00	0.00	0.00	0.00	0.00	0.00	0.00	0.00						
125	0.00	0.00	0.00	0.00	0.00	0.00	0.00	0.00	0.00	0.00	0.00	0.00						
130	0.00	0.00	0.00	0.00	0.00	0.00	0.00	0.00	0.00	0.00	0.00	0.00						
135	0.00	0.00	0.00	0.00	0.00	0.00	0.00	0.00	0.00	0.00	0.00	0.00						
140	0.00	0.00	0.00	0.00	0.00	0.00	0.00	0.00	0.00	0.00	0.00	0.00						
145	0.00	0.00	0.00	0.00	0.00	0.00	0.00	0.00	0.00	0.00	0.00	0.00						
150	0.00	0.00	0.00	0.00	0.00	0.00	0.00	0.00	0.00	0.00	0.00	0.00						
155	0.00	0.00	0.00	0.00	0.00	0.00	0.00	0.00	0.00	0.00	0.00	0.00						
160	0.00	0.00	0.00	0.00	0.00	0.00	0.00	0.00	0.00	0.00	0.00	0.00						
165	0.00	0.00	0.00	0.00	0.00	0.00	0.00	0.00	0.00	0.00	0.00	0.00						
170	0.00	0.00	0.00	0.00	0.00	0.00	0.00	0.00	0.00	0.00	0.00	0.00						
175	0.00	0.00	0.00	0.00	0.00	0.00	0.00	0.00	0.00	0.00	0.00	0.00						
180	0.00	0.00	0.00	0.00	0.00	0.00	0.00	0.00	0.00	0.00	0.00	0.00						

C Range: 0 - 360DEG  
C Interval: 30.0DEG  
Test Speed: HIGH  
Temperature:25.3℃  
Operators:zoe  
Test Date:2024-10-16

Range: 0 - 180DEG  
Interval: 1.0DEG  
Test System:EVERFINE GO-SPEX500\_V1 SYSTEM V2.00.461  
Humidity:65.0%  
Test Distance:3.160m [K=1.0000]  
Remarks: LAMP:BXEX-30G-11H-3A-00-0-0 Ra:90  
LENS:25R  
NOT DRIVER:300mA  
30minutes warm-up